

Fixing Plates



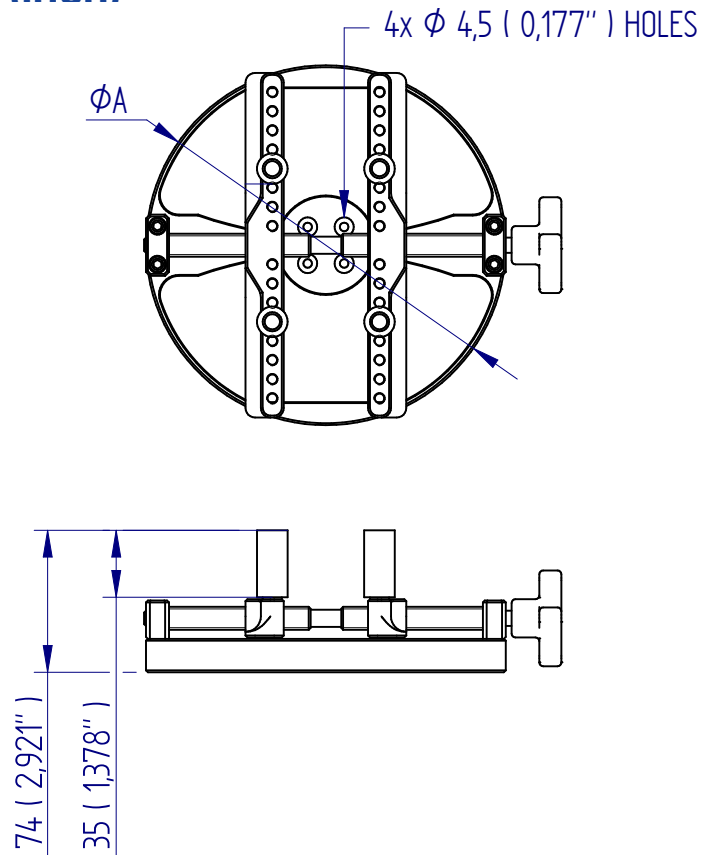
Description

Upper and lower fixing plates offer highly versatile sample fixturing, fully adjustable to accommodate a variety of forms. Four pegs are supplied which screw into appropriate points to suit sample dimensions. Note: the upper fixing plate can only be used with the 6 N.m and 10 N.m sensors, and the lower fixing plate is not suitable for use with the Helixa.

Specifications

| Part No. | Type | Thread 1 | Capacity Min/Max Ø | | Diameter (ØA) | | Height | | Weight | |
|----------|--------------------|----------|--------------------|---------------|---------------|-------|--------|-------|--------|---------|
| 432-320 | Lower Fixing Plate | 4 x M4 | 10 mm / 190 mm | 0.39" / 7.48" | 188 mm | 7.40" | 74 mm | 2.92" | 950 g | 2.10 lb |
| 432-321 | Upper Fixing Plate | 4 x M4 | 10 mm / 78 mm | 0.39" / 3.07" | 100 mm | 3.94" | 74 mm | 2.92" | 475 g | 1.05 lb |

Dimensions mm (inch)



DISTRIBUTOR STAMP

Mecmesin reserves the right to alter equipment specifications without prior notice.

E&OE



FS 58553

Head Office Mecmesin Limited

w: www.mecmesin.com
e: sales@mecmesin.com

North America Mecmesin Corporation

w: www.mecmesincorp.com
e: info@mecmesincorp.com

France Mecmesin France

w: www.mecmesin.fr
e: contact@mecmesin.fr

Asia Mecmesin Asia Co., Ltd

w: www.mecmesinasia.com
e: sales@mecmesinasia.com

Germany Mecmesin GmbH

w: www.mecmesin.de
e: info@mecmesin.de

China Mecmesin (Shanghai) Pte Ltd

w: www.mecmesin.cn
e: sales@mecmesin.cn